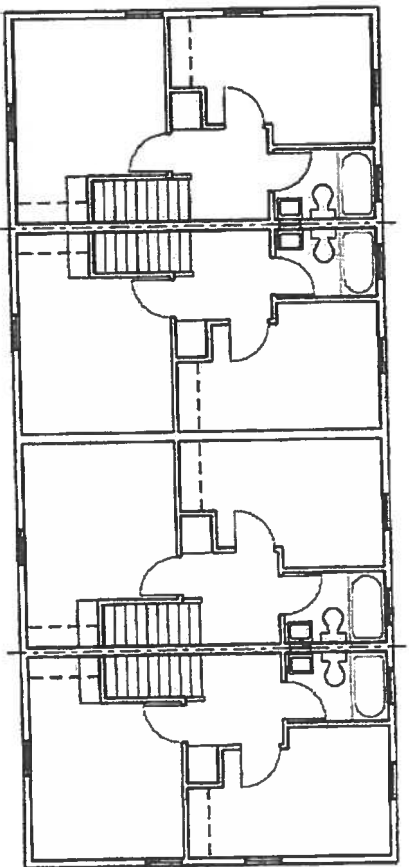
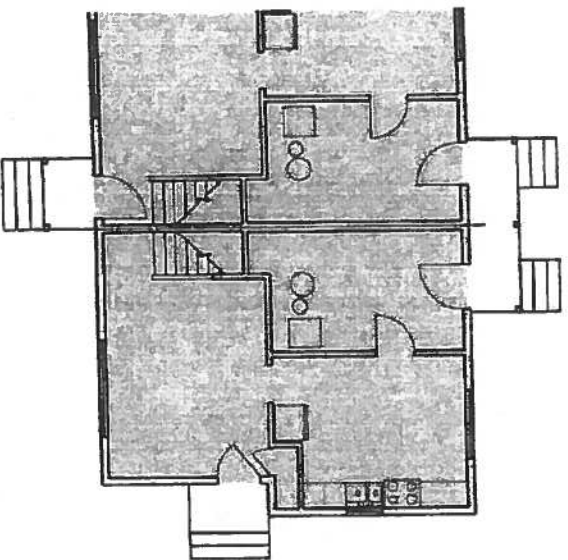


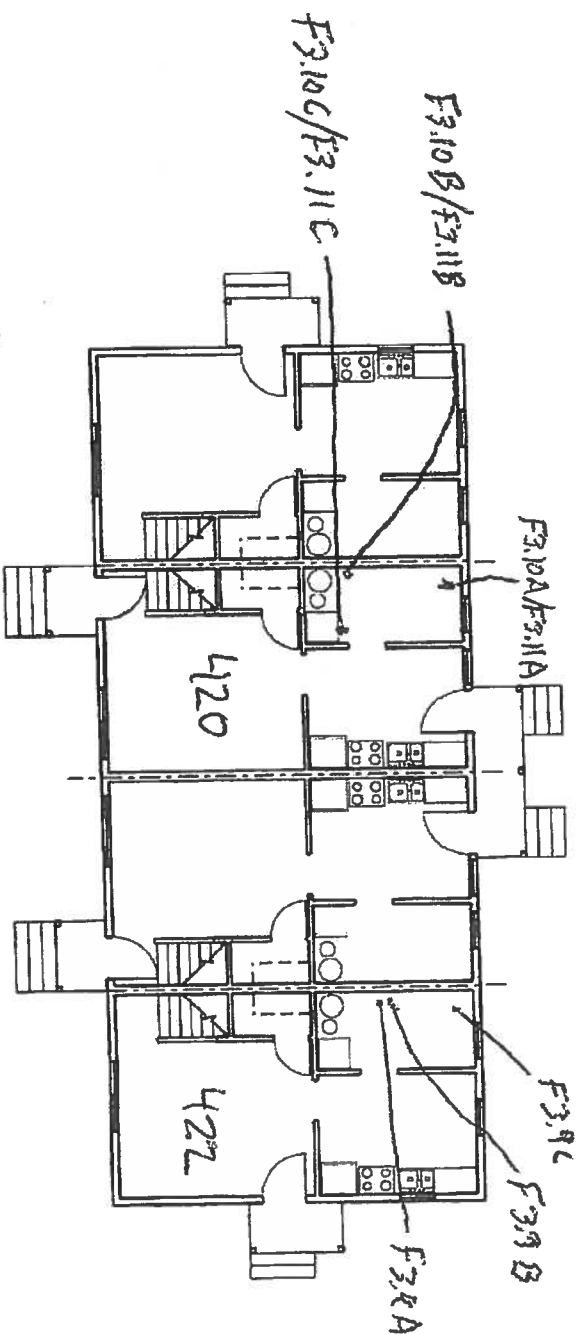
2 "G"



SECOND FLOOR PLAN 4-2 "F"

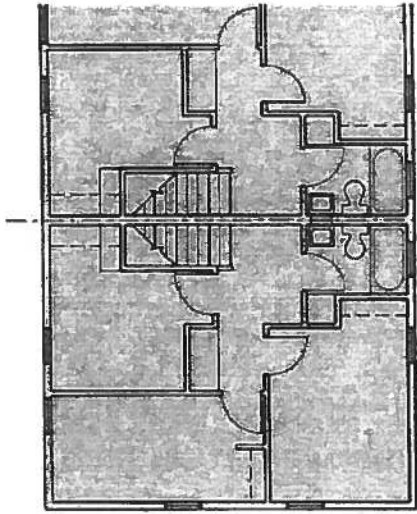


N 4-1 "G"

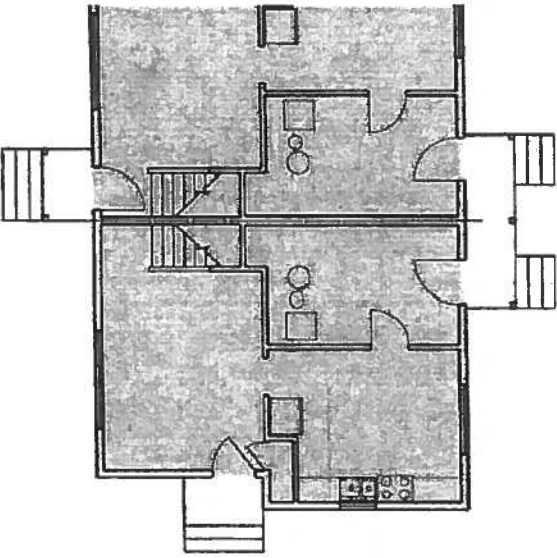


FIRST FLOOR PLAN 4-2 "F"

470 472

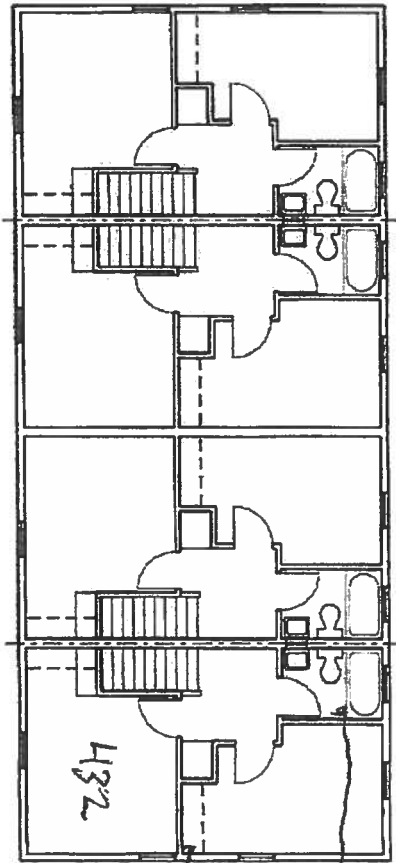


2 "G"

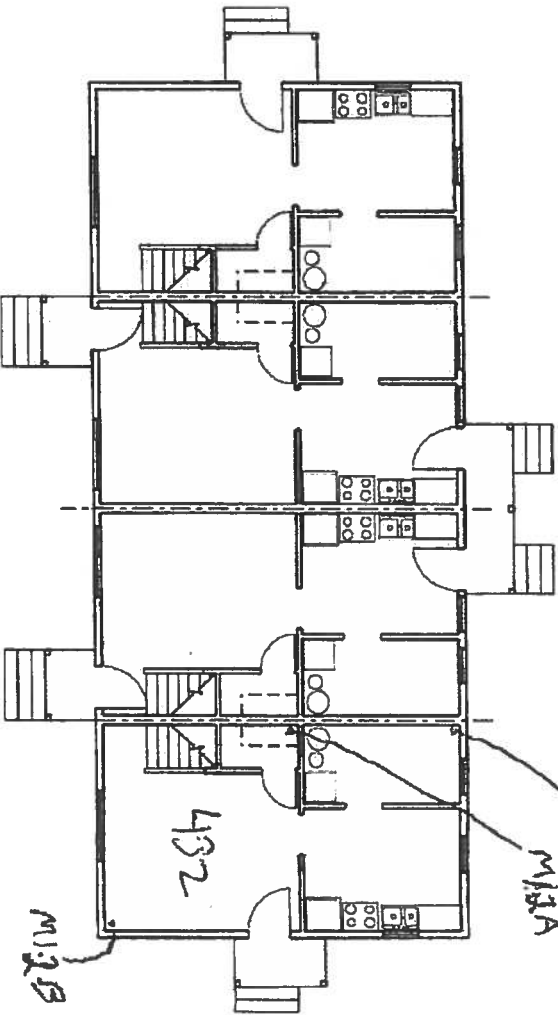


N 4-1 "G"

All samples on
this page are
from M.I.A

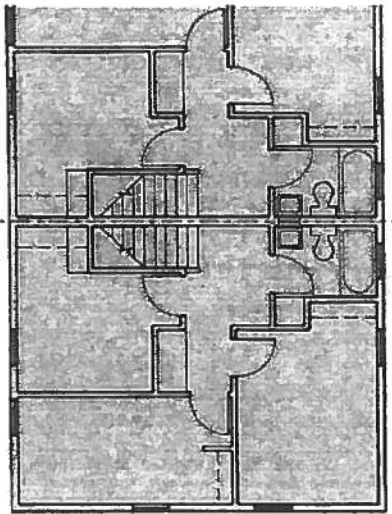


SECOND FLOOR PLAN 4-2 "F"

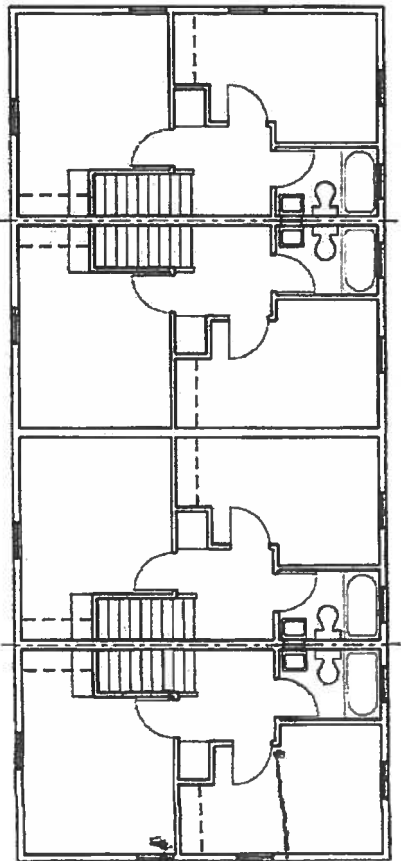


FIRST FLOOR PLAN 4-2 "F"

432

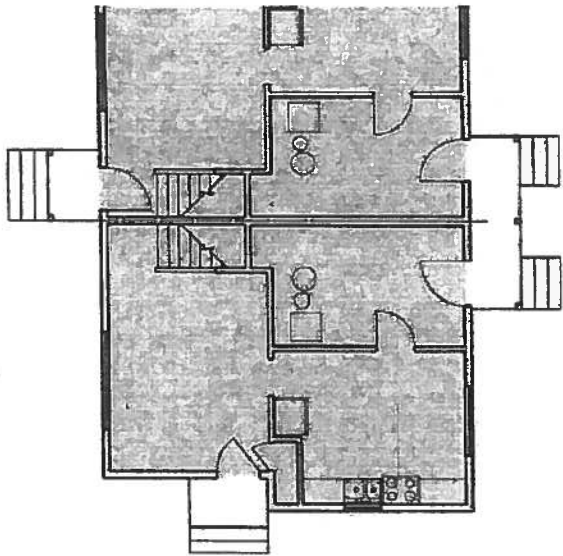


2 "G"

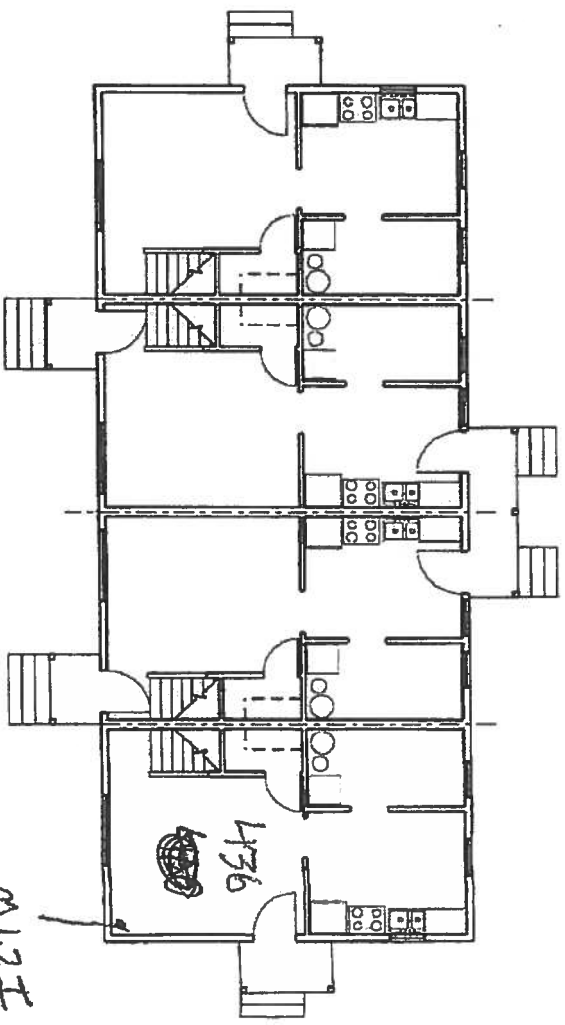


SECOND FLOOR PLAN 4-2 "F"

M12J
M12K



N 4-1 "G"

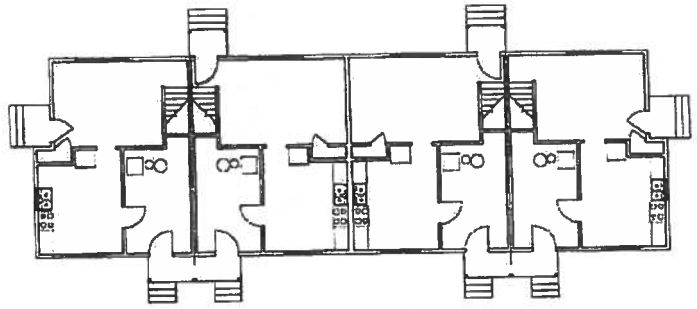


FIRST FLOOR PLAN 4-2 "F"

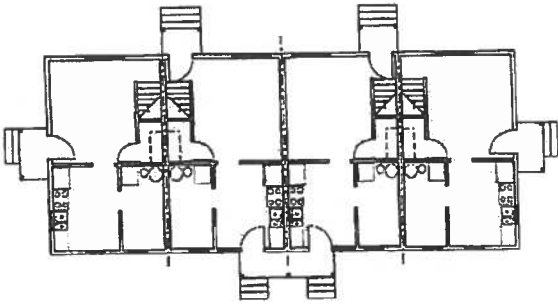
M12I
436

436

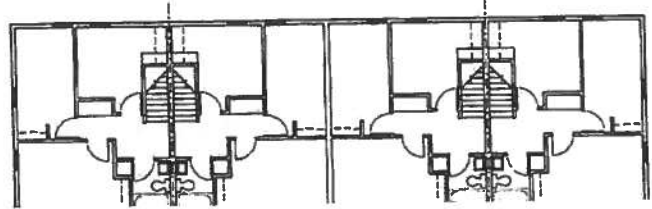
FIRST FLOOR PLAN 4-1 "G"



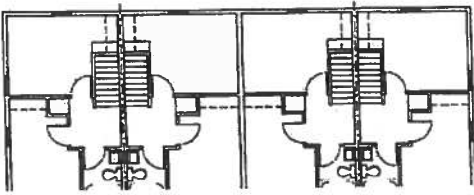
FIRST FLOOR PLAN 4-2 "P"



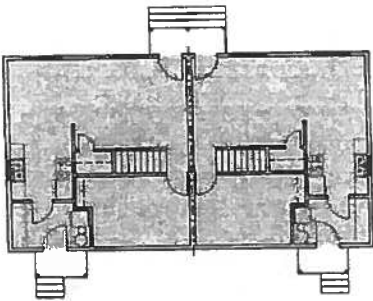
SECOND FLOOR PLAN 4-2 "G"



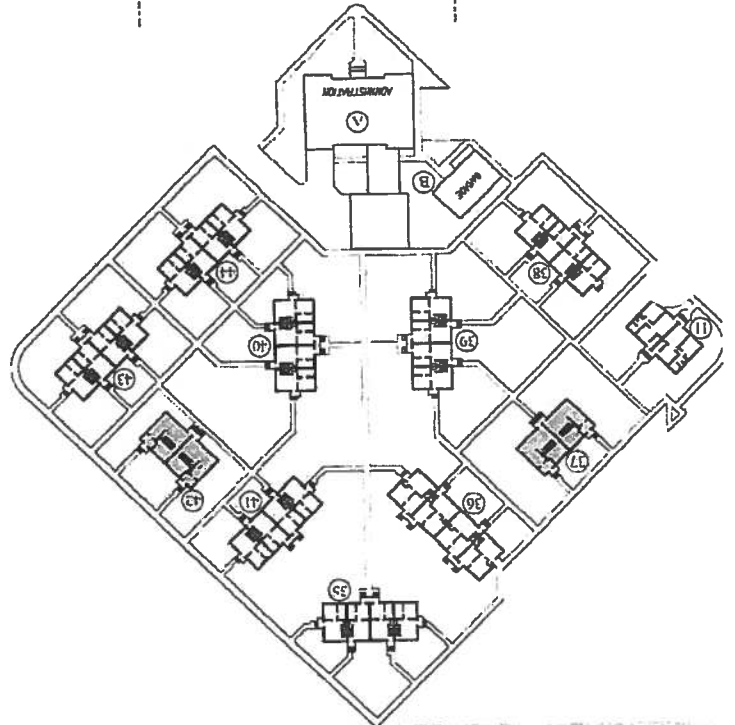
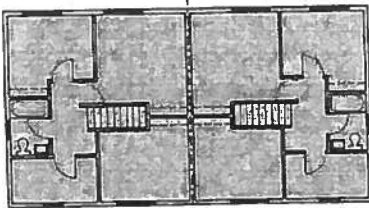
SECOND FLOOR PLAN 4-2 "P"



FIRST FLOOR PLAN 4-1 "H"

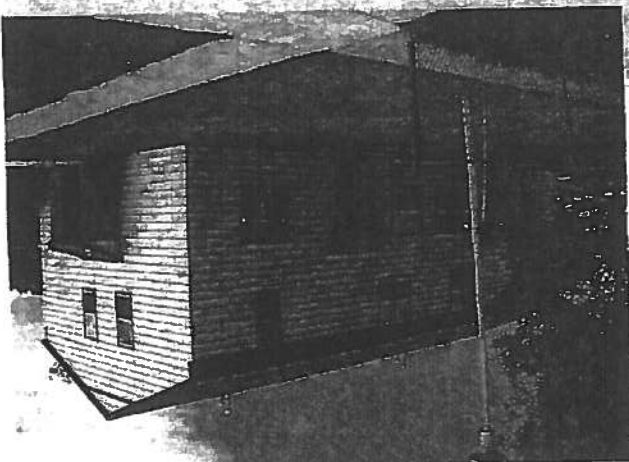


SECOND FLOOR PLAN 4-2 "H"

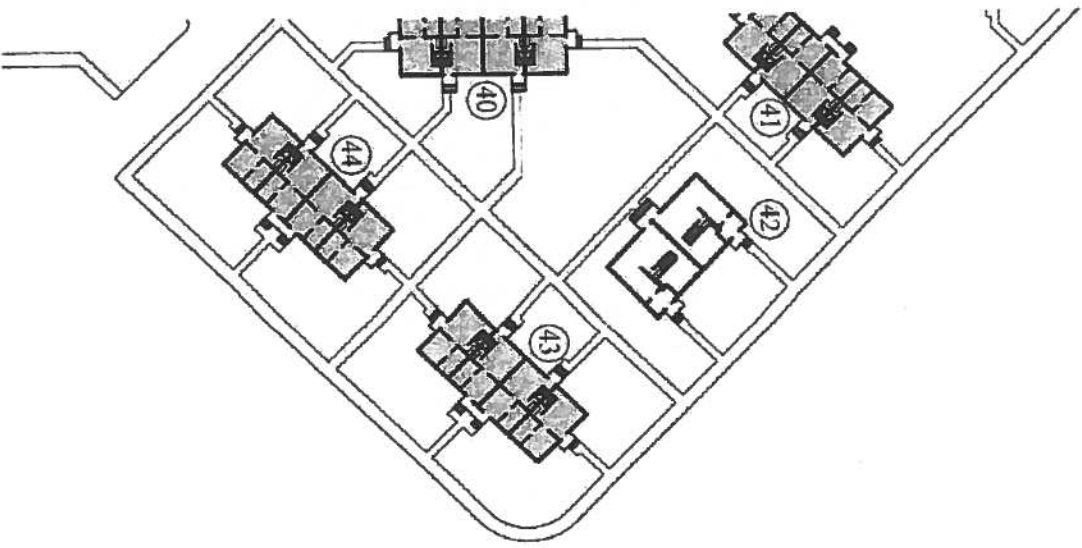


MT004002 S.01 Quadrant D

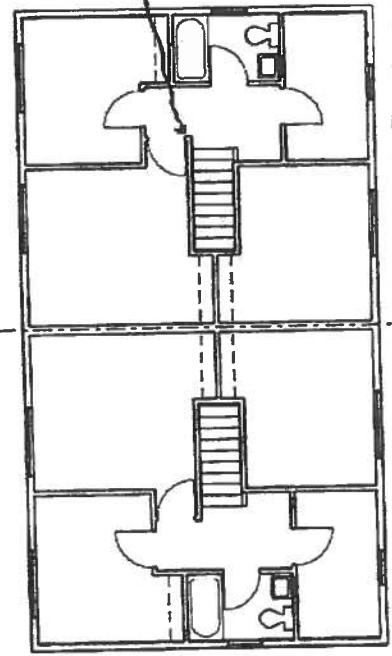
SITE PLAN 4-1 AND 4-2 PROJECTS



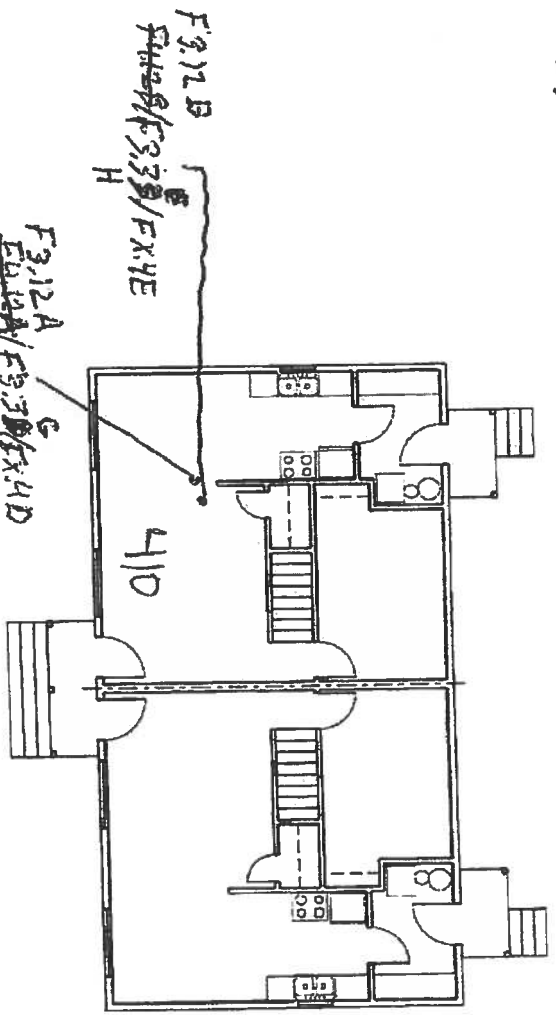
Quadrant D



410



F4.12B/F3.3B/FX.4E
F3.12C

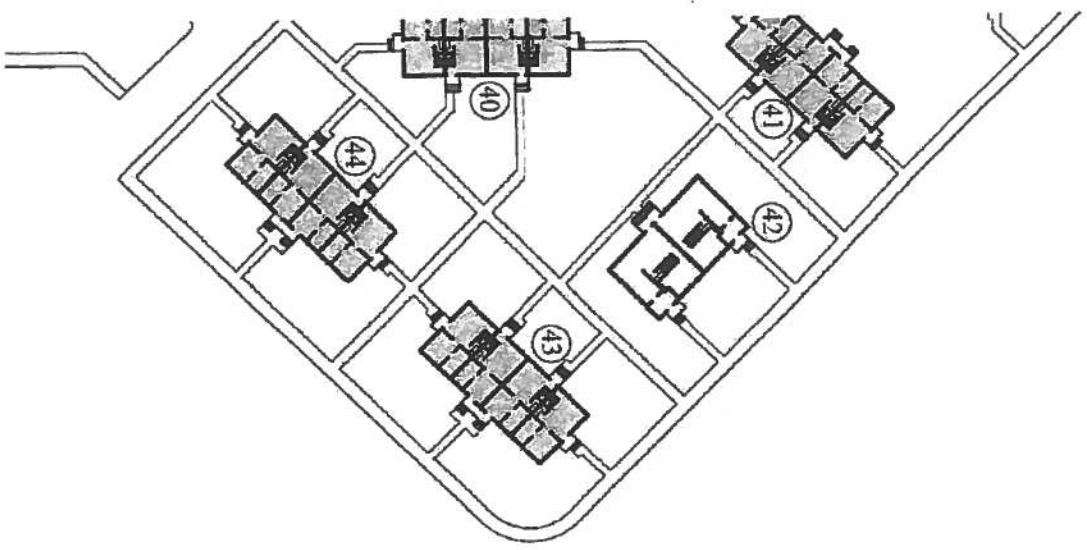


FIRST FLOOR PLAN 4-1 "H"

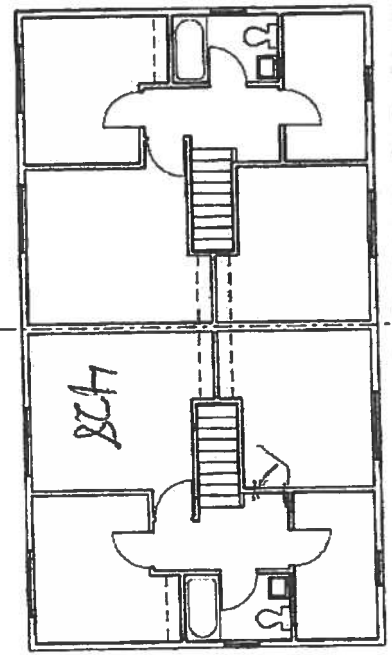
F3.12A
F4.12A/F3.3B/FX.4D

F3.12B
F4.12B/F3.3B/FX.4E
H

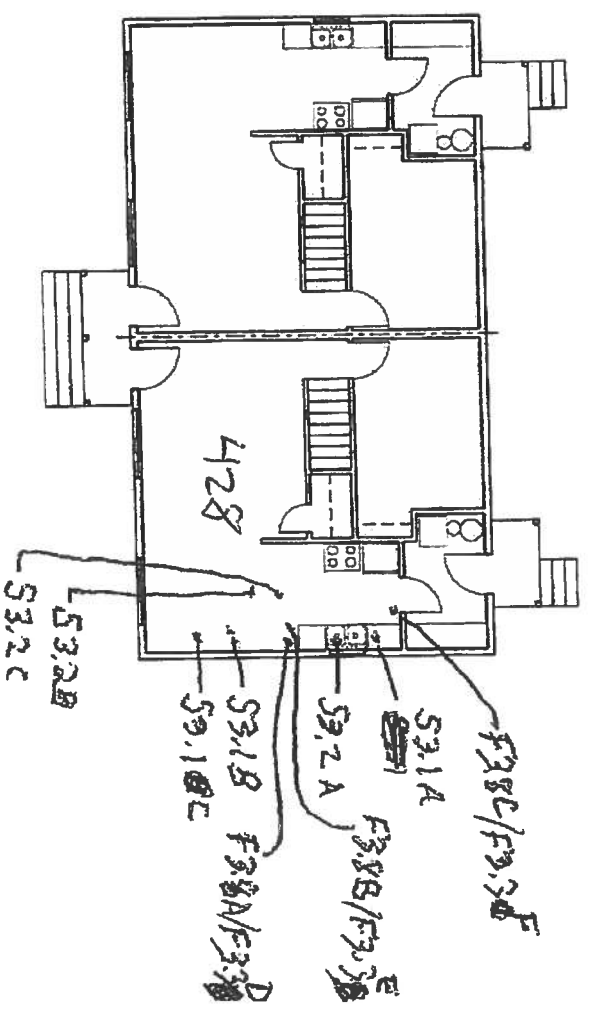
Quadrant D



428



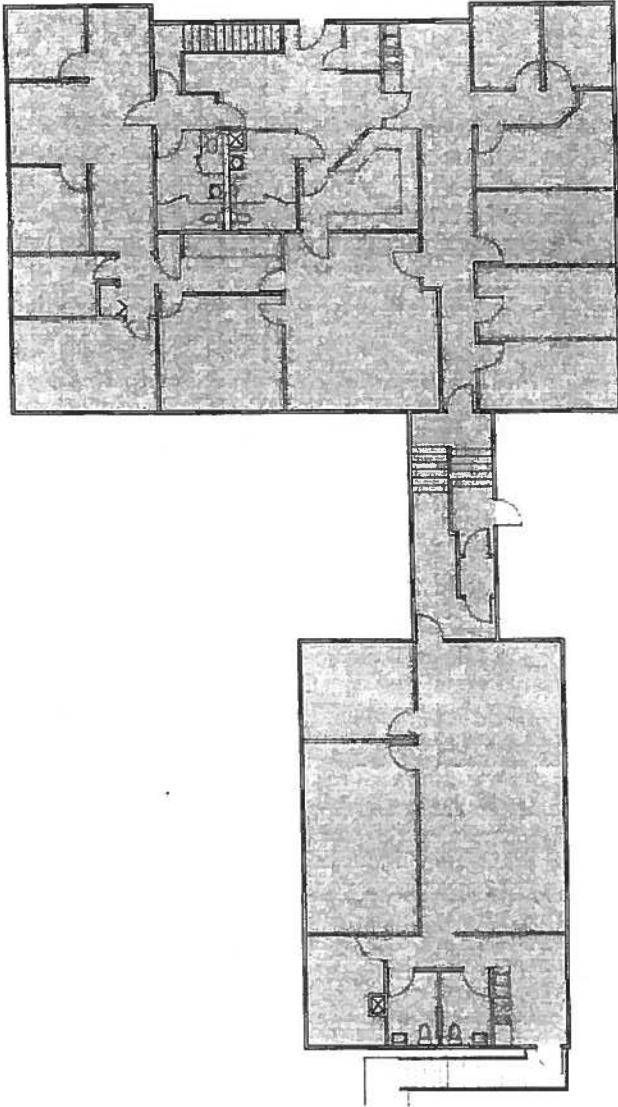
SECOND FLOOR PLAN 4-2 "H"



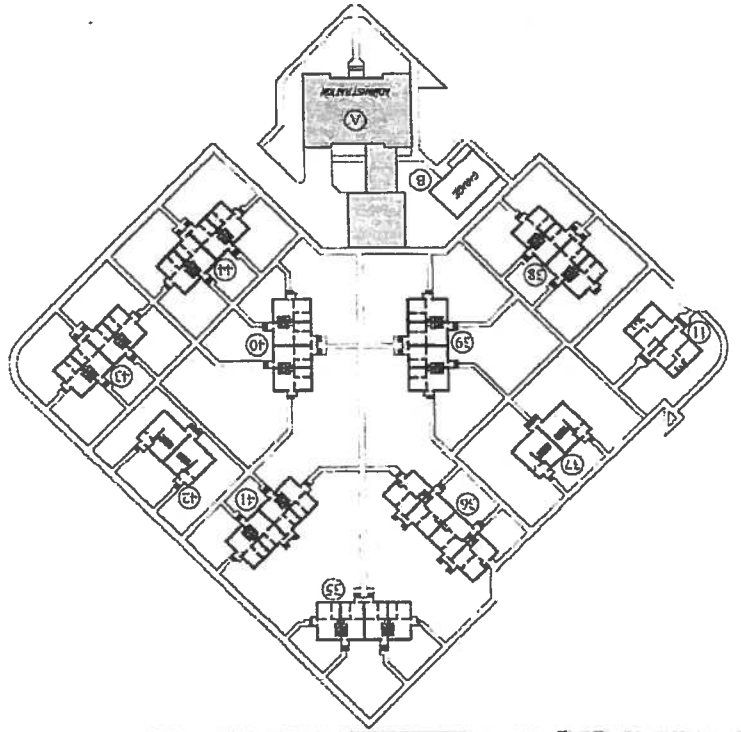
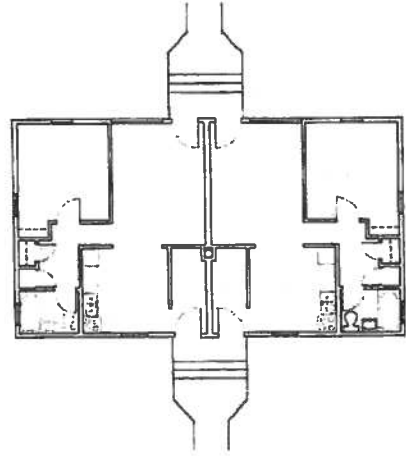
FIRST FLOOR PLAN 4-1 "H"



MAIN FLOOR PLAN

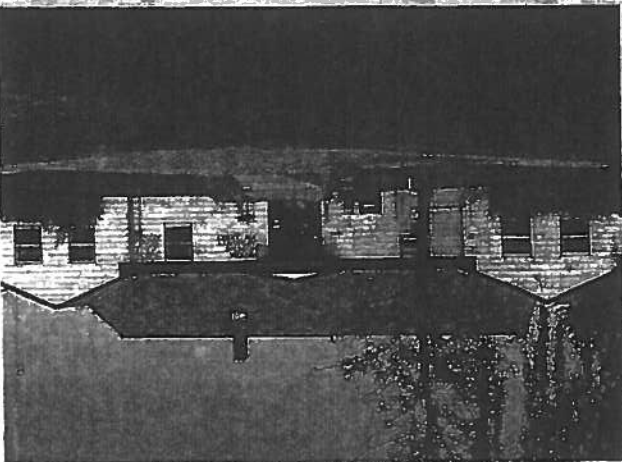
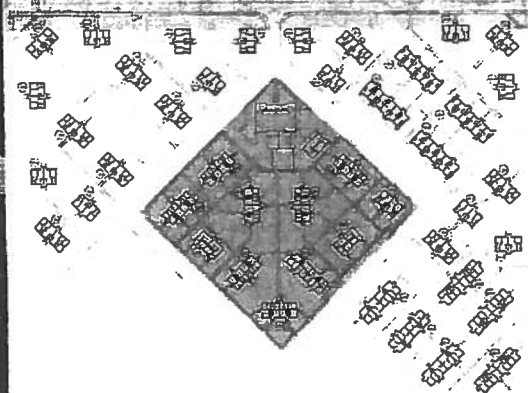


FIRST FLOOR PLAN 4-1 "A"



MT004001 S 01
Quadrant D

SEE PLAN 4-1 AND 4-2 PROJECTS



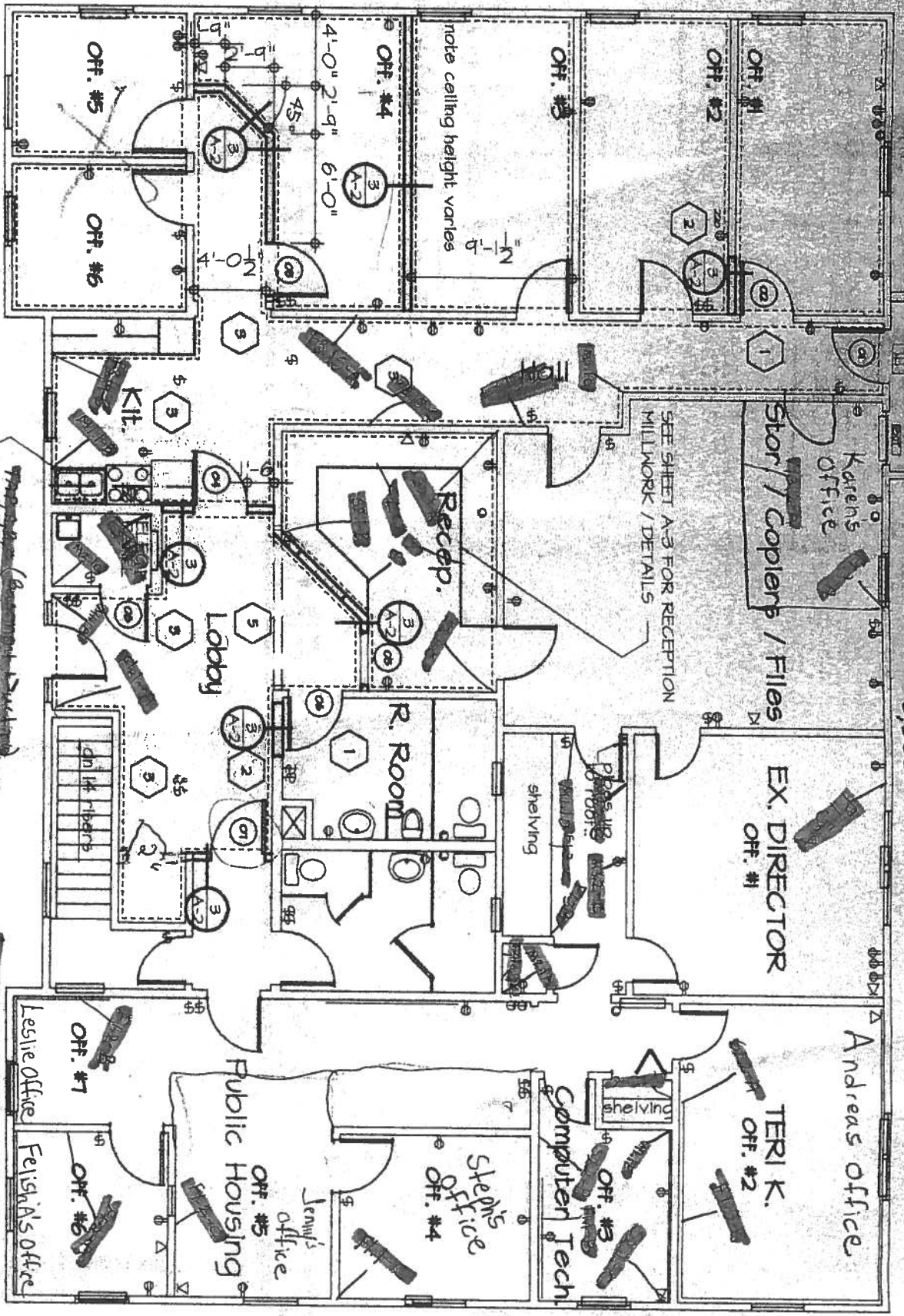
Quantities of TSI Fittings in Apartment Crawlspace

Appendix C

Apt # per Crawlspace	Floorplan Style	Bldg #	Qty Possible Fittings/Crawlspace	Qty TSI-ACM Fittings/Crawlspace
101/102	A	1	16	8
103/104	A	2	16	8
105	C	3	10	10
106	C	3	10	2
123/124	D	12	20	16
125/126	D	12	20	12
127/128	D	12	20	16
129/130	D	13	20	16
131/132	D	13	20	12
133/134	D	13	20	16
135/136	D	14	20	16
137/138	D	14	20	16
139/140	D	14	20	16
141/142	D	15	20	16
143/144	D	15	20	12
145/146	D	15	20	16

Appendix D
**Asbestos Sample Location Maps for Administration
and Daycare Buildings**

HHA Admin. Building
48x70
3,360sf



FLOOR PLAN - NEW CONSTRUCTION

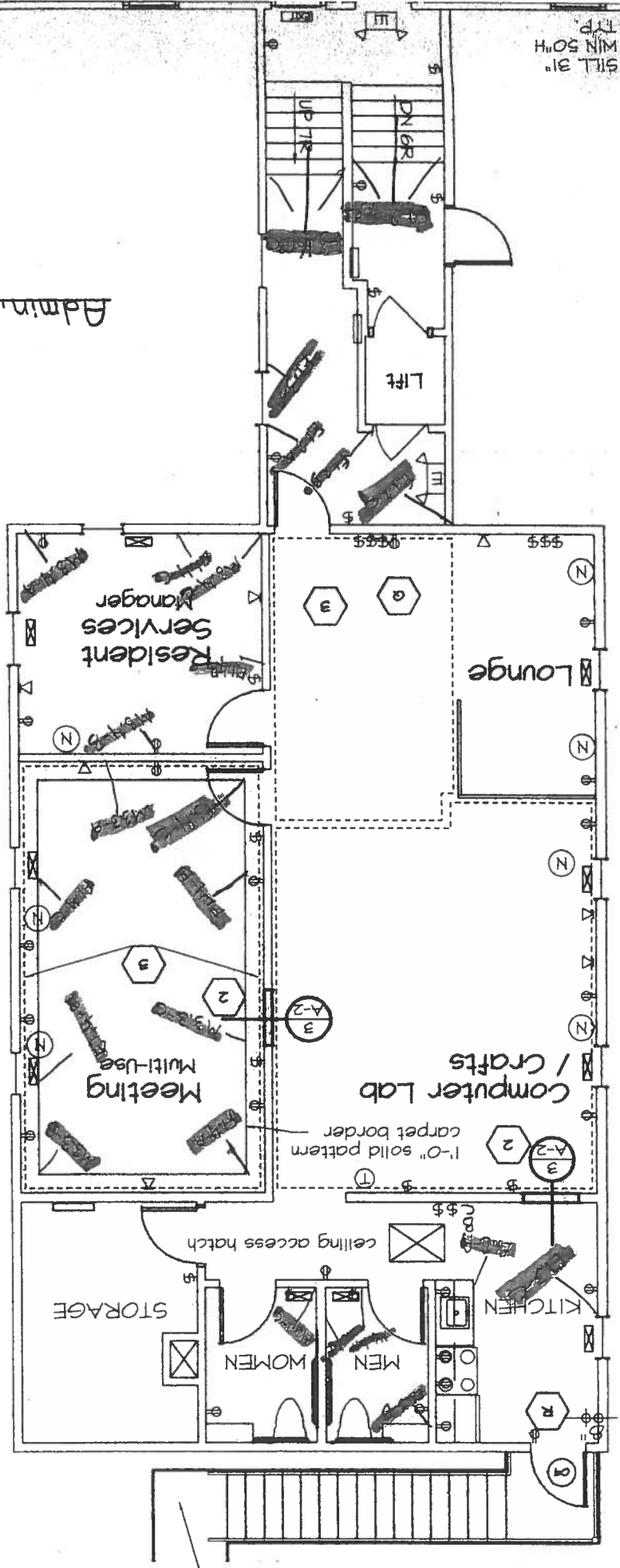
- 1 AT COMPLETION OF DOOR INSTALLATION - PATCH, REPAIR, TAPE AND PAINT ALL ADJACENT WALL SURFACES AS READ FOR A COMPLETE AND ENDED APPEARANCE. PAINT COLOR TO MATCH EXISTING.
 - 2 1/8" = 1'-0"
- SEE SHEET A-3 FOR RECEPTION MILLWORK / DETAILS
- SEE SHEET A-3 FOR KITCHEN MILLWORK / DETAILS
- REF NORTH

01
02
03
04
05
06
07
08
09

Birch 36

31 x 48
1,488sf

Admin. Building



RUBBER

Asbestos Regulatory Overview

Appendix E

ASBESTOS REGULATORY OVERVIEW

There are three federal agencies that regulate removal, transport, and disposal of asbestos. They are the Environmental Protection Agency (EPA), Occupational Safety and Health Administration (OSHA), and the Department of Transportation (DOT).

Environmental Protection Agency

The Environmental Protection Agency (EPA) is required under The Clean Air Act, to protect the general public from exposure to airborne contaminants that are known to be hazardous to human health. To meet this requirement, the EPA established National Emission Standards for Hazardous Air Pollutants (NESHAP). Asbestos was one of the first hazardous air pollutants regulated.

The asbestos NESHAP regulations protect the public by minimizing the release of asbestos fibers during the processing, handling, and disposal of asbestos-containing material. To this end, NESHAP specified work practices to be followed during demolition and renovations of all structures, installations, and buildings. The regulations also require notification to applicable state and local agencies and/or the EPA Regional Office prior to all demolition or before renovations of buildings that contain a certain threshold amount of asbestos. The NESHAP has grouped asbestos containing materials (ACBM) into three categories: Regulated Asbestos containing material, Category I non-friable ACBM, and Category II non-friable ACBM.

A regulated asbestos containing material (RACM) means any friable asbestos material, a Category I non-friable that will or has been subjected to sanding, grinding, cutting, or abrading, or a Category II non-friable ACBM that has a high probability of becoming or has become crumbled, pulverized, or reduced to powder by forces expected to act on the material in the course of demolition or renovation operations.

A RACM is a friable asbestos-containing material or any Category I or Category II material that has become friable.

A Category I non-friable asbestos containing material means asbestos-containing packings, gaskets, resilient floor covering, and asphalt roofing products containing equal to or greater than one percent ($\geq 1\%$) asbestos.

Category II non-friable ACBM means any material excluding Category I non-friable ACBM, containing $\geq 1\%$ asbestos.

Occupational Safety and Health Administration

The Occupational Safety and Health Administration (OSHA) regulates asbestos exposure to workers under the Construction Industry Standard (29 CFR 1910.1101). This section regulates asbestos exposure in all work, which includes demolition or salvage of structures where asbestos is present, removal or encapsulation of materials containing asbestos, construction, alteration, repair, maintenance or renovation of structures, substrates or portions that contain asbestos, installation of products that contain asbestos, asbestos spills/emergency cleanup and the transportation, disposal, storage, containment of and housekeeping activities involving asbestos or products containing asbestos, on the site or location at which construction activities are performed.

These regulations set minimum levels of work effort that must be performed on a given type of asbestos material. OSHA defines these work types as Class I through IV. Class I includes activities involving the removal of thermal system insulation or surfacing materials. Class II includes activities involving the removal of asbestos-containing wall board, floor tile and sheet flooring, roofing and siding shingles and construction mastics. Class III includes repair and maintenance operations where ACM is likely to be disturbed. Class IV includes maintenance and custodial activities during which employees contact ACM and activities to clean up waste and debris containing ACM.

Department of Transportation

The Department of Transportation (DOT) requires that each individual bag of asbestos-containing waste be labeled and that the transport vehicle be properly placarded. In addition, for disposal purposes, all asbestos-containing waste must be double wrapped, and properly labeled as required by OSHA, EPA and DOT. These wastes must be deposited in a Class II landfill approved by the EPA. Furthermore, the NESHAP requirements state that there shall be no visible emissions to the outside air during collection, packaging, transportation or deposition of the ACM waste. The transportation and disposal of ACM waste is documented on a Waste Shipment Record and the transport of the waste must be performed by a person trained in handling of asbestos, with a minimum of an EPA accredited 40-Hour Supervisor training class.